



Ranfac SNARECOIL™ Bone Marrow Biopsy Needle



“ I have been using the Snarecoil™ needle for at least two years. I have used many different bone marrow needles, and the Snarecoil™ is my favorite needle. The procedure is faster since there is less manipulation of the needle before pulling it out with the biopsy – just flip the lever and give a couple of quick twists. My biopsies are frequently 3 to 4 cm in length. ”

– Dr. Robert Hall, MD
Pathologist



To View a product animation visit
www.ranfac.com or simply
scan the barcode below with
your Smartphone.



HOW IT WORKS

This design incorporates a patented* SNARECOIL™ located at the distal end of the needle lumen, which winds around and captures long, non-fragmented specimens. The coil grabs the tissue specimen at the tip and retains it safely within the needle. This action, actuated by a lever in the instrument handle, eliminates the need to twist or manipulate the needle to sever the specimen.

FEATURES

- Comfortable full palm handle design allowing user to apply significant pressure when needed. Ergonomically designed to minimize hand and arm fatigue.
- Boring Point on needle Cannula allows for easy of penetration of the cortex.
- Specially designed Cannula provides superior coring.
- Marked Probe, allowing operator to see specimen retention.
- ISO Luer fitting in Handle.

- “OPEN” and “CLOSED” positions for determining status of the SNARECOIL mechanism.
- Tip Probe Guide to help facilitate placement of probe for removing specimen and to eliminate risk of needle stick.
- Enclosed NeedleVISE™ per each sharp, securing each sharp after use and before disposal.
- NON Vented Luer cap provided with each needle.

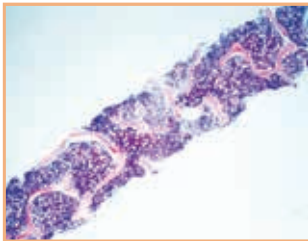
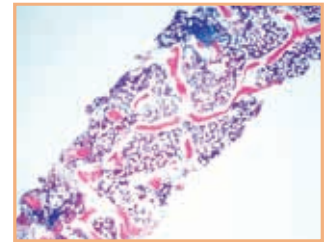
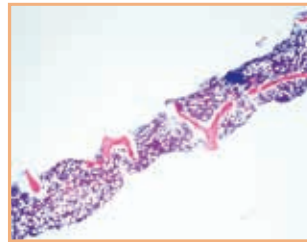
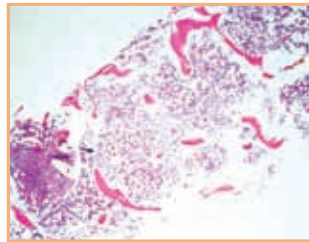
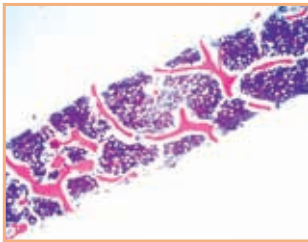
VOLUME MATTERS

The Ranfac SNARECOIL™ Bone Marrow Biopsy Needle was designed to deliver unrivaled consistency and reliability in obtaining adequate bone marrow specimens for pathologic evaluation.

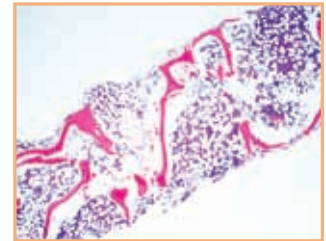
The photomicrographs shown here were taken with samples obtained from the Ranfac SNARECOIL™ Bone Marrow Biopsy Needle.

** Patent numbers: U.S. Patent Nos. 5,522,398 & 5,634,473.
Other patents pending.*

Volume of the biopsy is **CRUCIAL** for detecting focal marrow involvement by pathologic changes



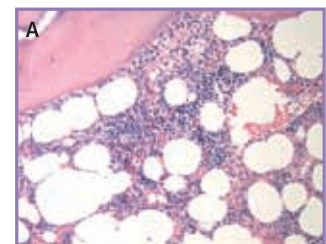
The sections shown are low power (2x) of bone marrow biopsies obtained from Ranfac's 8 and 11 gauge devices that measure between 1.8-2.5 cm in length. They are intact biopsies with parallel edges, maintained bone structure and lack of crush and aspiration artifacts.



Biopsy of a bone marrow with significant osteoporosis showing patchy cellularity.



Note the completely acellular areas (B) that raise the differential diagnosis of aplastic marrow.

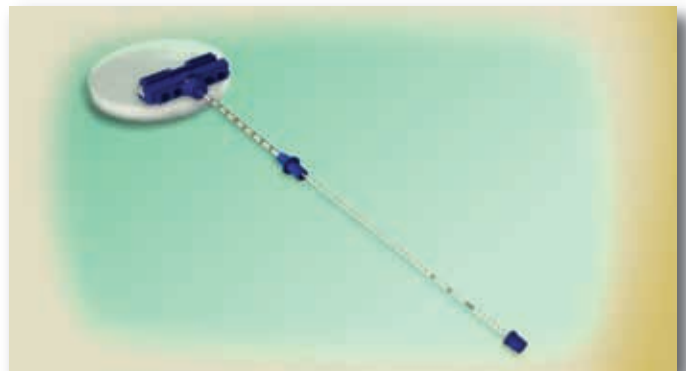
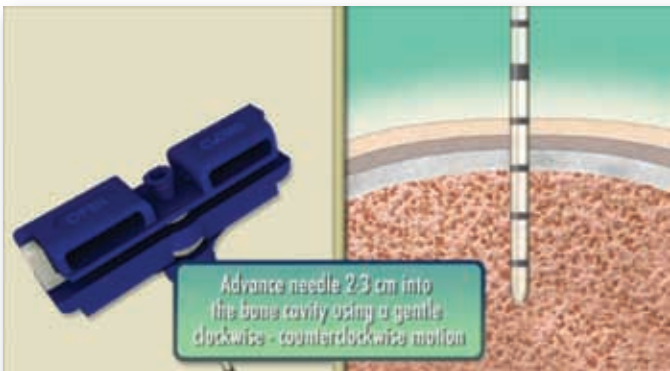
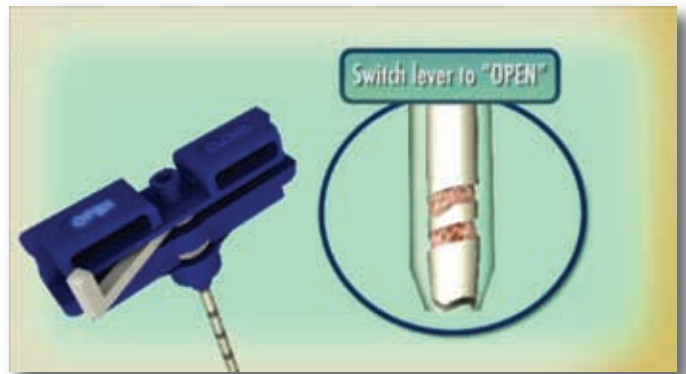
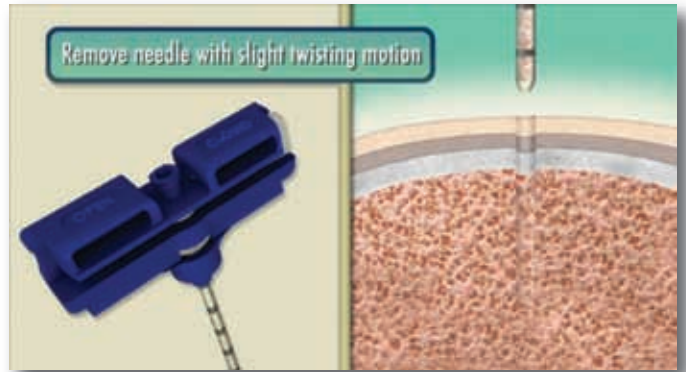
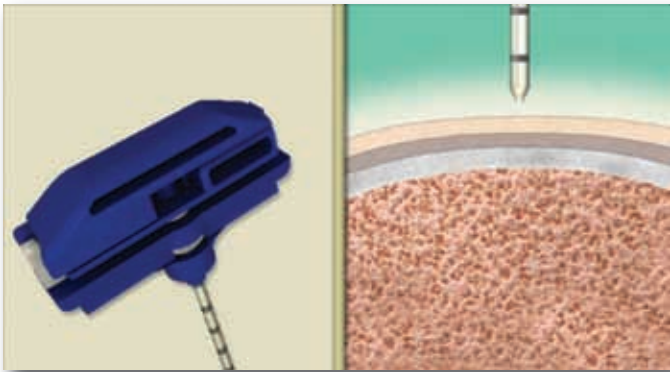


Note the essentially normal marrow (A) at the end of the biopsy.

OBTAINING A BIOPSY

These snapshots were taken from the full animation that may be found on the Ranfac website at www.ranfac.com or by scanning the barcode found on the cover page with your Smartphone.

Please refer to the product's direction for use for official instructions.



SNARECOIL™ BONE MARROW BIOPSY NEEDLE

Delivered in packs of 10

Catalog#	Part#	Description
RBN-84	74050-06M	8 Gauge x 4"
RBN-86	74049-07M	8 Gauge x 6"
RBN-114	74050-01M	11 Gauge x 4"
RBN-114S	74092-01M	11 Gauge x 4", Spade Point
RBN-116	74049-02M	11 Gauge x 6"
RBN-116S	74093-02M	11 Gauge x 6", Spade Point
RBN-132	74050-05M	13 Gauge x 2"
RBN-133	74050-03M	13 Gauge x 3"

BONE MARROW ASPIRATION NEEDLE

Catalog#	Part#	Description
RAN-1528	74047-03M	15 Gauge X 2.8"
RAN-154	74047-04M	15 Gauge X 4"
RAN-16	74048-02M	16 Gauge X 2.5"



BONE MARROW BIOPSY PROCEDURE TRAYS

The Ranfac® Bone Marrow Biopsy and Aspiration Tray features the Ranfac SNARECOIL™ Bone Marrow Biopsy Needle as well as the specific componentry to perform bone marrow procedures.

This double-stack tray offers convenience, safety and optimal procedure performance. It includes prepping and draping componentry as well as anesthetic and procedural products. The sterile tray helps eliminate the risk of contamination.

Please contact a sales representative today or visit www.ranfac.com to assemble your custom procedure trays.

The section shown on front cover is low power (2x) of bone marrow biopsy obtained from Ranfac's 8 gauge Snarecoil™ Biopsy Needle.

ORDERING INSTRUCTIONS



To place an order or to receive more information contact:
Ranfac Customer Service
800.272.6322
Monday – Friday
8:30 – 5:00 E.T.

Fax your orders to our 24 hour fax line:
508.584.8588

Mail your orders to:
Ranfac® Corporation
PO Box 635
Avon, Massachusetts
02322-0635



ISO 13485

U.S. Patent Nos. 5,222,398 & 5,634,473. Other patents pending. NeedleVise® is a registered trademark of the Atrion Medical Products, Inc.

Precision instruments for specialized applications

Ranfac® Corp. | 30 Doherty Avenue | P.O. Box 635 | Avon, Massachusetts | 02322-0635 | USA

Call toll free 1.800.2-RANFAC (1.800.272.6322) • Tel 508.588.4400 • Fax 508.584.8588 • www.ranfac.com • Email: info@ranfac.com

Since 1888